



User manual

ECO range display chillers and display freezers



To ensure safe operation, please read this user manual thoroughly before use.

© Husky. Husky reserve the right to change specifications at any time without notice.
Images used are for illustration only. Stock not included.



Welcome to your new Husky

Thank you for buying this Husky commercial appliance. It has been designed and manufactured for many years of trouble-free service.

Operation is very simple, but please take a few minutes to read this user manual. It contains important safety information, and tips to ensure you receive the best possible service from your Husky appliance.

CONTENTS

| | |
|--|----|
| Important Notes..... | 3 |
| Warning! Risk of electrical shock hazard | 3 |
| Disposal of old refrigerators..... | 3 |
| Safety instructions and warnings | 3 |
| How to minimise the energy consumption of your appliance | 4 |
| Before using for the first time..... | 5 |
| Troubleshooting..... | 6 |
| Display Chillers C5H ECO C10H ECO | 7 |
| Operating Instructions..... | 7 |
| Exploded diagram | 8 |
| Circuit diagrams | 10 |
| Display Freezers F5H ECO F10H ECO | 12 |
| Operating Instructions..... | 12 |
| Exploded diagram | 13 |
| Circuit diagrams | 15 |

All models

Important Notes

WARNING: RISK OF ELECTRICAL SHOCK HAZARD

This refrigeration appliance must be earthed.

If the power cable is damaged, it must be replaced by a qualified engineer to avoid shock hazard. **DO NOT ATTEMPT TO SERVICE THE ITEM YOURSELF.** Ensure that the appliance is properly earthed. Stop using the appliance immediately if electric shock is felt when touching the cabinet.



DISPOSAL OF OLD REFRIGERATORS & FREEZERS

BE SURE TO MAKE ANY LOCKS UNUSABLE. IF POSSIBLE, REMOVE THE DOOR(S) AND DISCARD SEPARATELY.

WARNING - CHEMICAL HAZARD: DO NOT ALLOW CHILDREN TO PLAY WITH OLD REFRIGERATORS OR FREEZERS. CONTACT YOUR LOCAL AUTHORITY FOR PROPER DISPOSAL PROCEDURES.

Before disposing of an old appliance, please make sure it is switched off and safe. Unplug the appliance and break any locks in order to avoid children becoming trapped.

Please note: the refrigeration system contains gases and refrigerants which require specialist waste disposal. The valuable materials contained in a refrigerator or freezer can be recycled.

Contact your local waste disposal depot for proper disposal of an old appliance and contact your local authority or dealer if you have any questions.

Ensure the pipework of the old appliance is not damaged prior to disposal. You can contribute to the environmental awareness by insisting on an appropriate non-polluting method of disposal.

USERS IN EUROPE - WEEE COMPLIANCE

These appliances are authorised to carry the CE (Conformité Européenne) and WEEE (Waste Electrical and Electronic Equipment Directive) symbols.



The WEEE symbol on this appliance indicates that the product must not be disposed of with household waste. To help

prevent possible harm to health and the environment, the product must be disposed of by recycling methods authorised as environmentally safe. For more information on how to dispose of this product appropriately, contact your dealer or the recycling department at your local authority.

These appliances and their components undergo strict product testing by independent companies to comply or exceed all applicable local and international regulatory standards.

SAFETY INSTRUCTIONS & WARNINGS

Before switching on your appliance, read the information in this user manual carefully. The user manual contains important observations relating to the assembly, operation and maintenance of the appliance.

Please keep this user manual in a safe place for future reference. If you ever sell this appliance, hand this user manual to the new owner.

The manufacturer does not accept responsibility for any damages that may arise due to non-observation of these instructions.

- Do not use the appliance if it is damaged. If you are in any doubt, consult an engineer.
- Connection and installation of your Husky appliance are to be carried out in strict compliance with the relevant instructions in this user manual.
- Make sure there is a suitable power outlet with proper grounding to power the appliance.
- For safety, the appliance must be properly earthed in accordance with specifications.
- Always remember to unplug the appliance before cleaning. Never unplug this unit by pulling on the power cable. Always grip plug firmly and pull straight out from the socket.
- All electrical repairs must be carried out by a qualified engineer. Inadequate repairs may be dangerous.
- Do not damage any parts of the appliance which carry refrigerant by piercing, perforating, crushing, twisting or scraping. If refrigerant comes into contact with the eyes it may cause serious eye injury.
- Do not obstruct or cover the ventilation grille.
- Do not allow children to play with the appliance, or to sit on it or hang onto the door.
- This appliance is not intended for use by persons (including children) with reduced physical, sensory or mental capabilities, or lack of experience and knowledge, unless they have been given supervision or instruction concerning use of the unit by a person responsible for their safety.

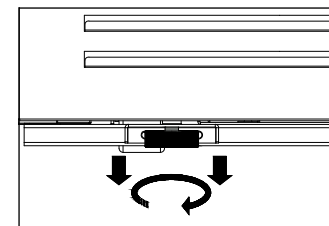
HOW TO MINIMISE THE ENERGY CONSUMPTION OF YOUR APPLIANCE

- Energy consumption will be lower if the appliance stands in a well ventilated space and in particular if the vents on the appliance are clear of obstruction.
- Do not place the appliance in direct sunlight or near a heat source such as ovens, radiators, heaters, etc as this will increase energy consumption.
- Keep the appliance door closed as much as possible.
- Setting the thermostat colder means higher energy consumption, so set only as cold as you really require.
- Do not overfill the appliance - overfilling means the cool air cannot circulate freely inside the appliance which may slow the process of chilling/freezing the contents and make the appliance less efficient.
- Defrost the appliance if frost can be seen building up inside - frost will increase energy consumption and make the chilling/freezing process slower (see section 'Defrosting').
- Turn the appliance off completely if it is not required for a period of days (or longer) to avoid wasting energy.

BEFORE USING FOR THE FIRST TIME

IMPORTANT: Before switching the appliance on, we recommend you allow it to stand upright for 8 hours. Failure to do this may result in damage to the appliance.

- Remove the wooden pallet and the packing.
- To ensure correct operation, it is important that the appliance is level. The cabinet may be levelled by turning either or both of the adjustable feet in the front corners. Use a spirit level to check.
- **IMPORTANT:** When the appliance is in its final position you must secure it by winding down the two threaded stabilising feet at the front corners of the appliance (see illustration right) so they are firmly on the floor. This will prevent any further unwanted movement.
- Before operation, we recommend that the cabinet is cleaned for reasons of hygiene and to remove any residue left from manufacture.
- For good circulation, vents must not be blocked. Keep a minimum of 100mm of clear space around the appliance. Your appliance should be placed on flat and firm surface for quieter operation.
- Do not expose the appliance to direct sunlight or a heat source such as ovens, radiators, heaters, etc.
- Do not under any circumstances place heated food or beverages in your appliance.
- Do not open the door more often than necessary to lessen the escape of cold air.
- For better air circulation, do not overfill the appliance.
- Adjust the thermostat according to the amount of product and the ambient temperature.



Troubleshooting

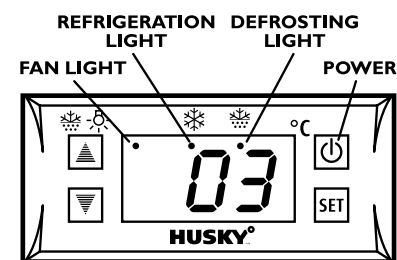
Before calling Technical Support, please check the following points; you may be able to solve any problem yourself.

| Problem | Possible Cause | Action |
|--|---|---|
| The appliance does not work properly. | The appliance is not plugged in. | Connect the plug to the power supply. |
| | The plug and/or the power cable are faulty. | Call your supplier or a qualified engineer. |
| | The fuse has blown. | Replace the fuse with one of the same rating. |
| | The appliance is faulty. | Call your supplier or a qualified engineer. |
| The appliance's internal temperature is too high or too low. | The wrong temperature is selected. | Check the controller and adjust the set temperature. |
| | The factory default settings for the controller are incorrect. | Call your supplier or a qualified engineer. |
| | The condenser is blocked by an accumulation of dust. | Clean using a vacuum cleaner and soft brush attachment (see pages 8, 14, 20, or 24) |
| | The doors are not fully closed. | Check the appliance is level and the seals are not damaged. |
| | The appliance is close to a heat source or the ambient temperature is too high. | Move the appliance to a better location and check it is out of direct sunlight. |
| | The ventilation grille is blocked. | Move the appliance to improve free movement of air. |
| The appliance is noisy in operation or makes unusual noises. • <i>Note: It is normal to hear some noises as refrigerant flows through the compressor.</i> | The appliance is not on a level, firm surface, or the unit may be touching other items. | Check location and position using a spirit level. |
| | The appliance is vibrating against a neighbouring object. | Relocate the appliance or the object. |
| Outer surfaces are wet | The appliance may be close to a water source or leak. | Dry surfaces thoroughly and move the appliance. |
| Inner surfaces are wet | The door may be opened too often or kept open too long. | Try to minimise opening of the doors for better cooling performance. |

Display Chillers C5H ECO & C10H ECO

Operating Instructions

TO OPERATE THE ELECTRONIC THERMOSTAT



The thermostat has been pre-set, and in most cases it is not necessary to adjust the settings. When the appliance is operating normally, the display will show the current temperature.

To display the set temperature press the **SET** button. Press the button again to return to normal operation.

To set a new temperature, press **SET**. The display will flash and the current set temperature will be displayed. Press the **▲** button to increase the set temperature, or press the **▼** button to decrease the set temperature. Press the **SET** button to save the new setting. The display will flash with the new value and then revert to display the cabinet temperature.

Please note:

1. When the appliance is connected to the mains for the first time there will be a short delay before cooling starts. During this time the Refrigeration Light will flash. After the short delay, cooling will begin and the Refrigeration Light will be illuminated. When the appliance reaches the set temperature, the Refrigeration Light will be off.
2. If you do not press any button, after six seconds the controller will return to its normal display.

To switch the appliance off, press **OFF** for six seconds. The display will show "-- --". To switch the appliance back on, press **ON** for one second. The display will show the cabinet temperature and the appliance will enter normal working mode.

DEFROSTING

The appliance defrosts automatically at preset intervals. If however the door is opened too often, or if the appliance is in a location with high humidity, or if the contents are changed more frequently, it may be necessary to defrost the appliance manually. To start or stop manual defrosting, press the **▲** button for six seconds. The Defrosting Light will be illuminated. Melt water runs to a container placed in the compressor compartment and evaporates. After defrosting is complete, the appliance will return to normal operation.

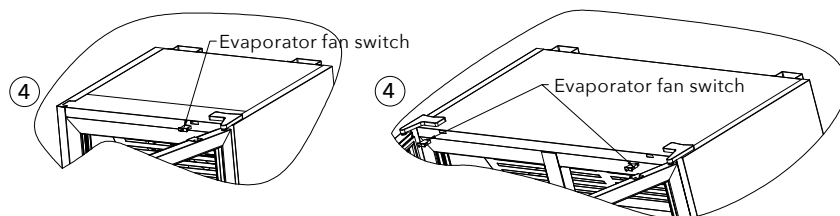
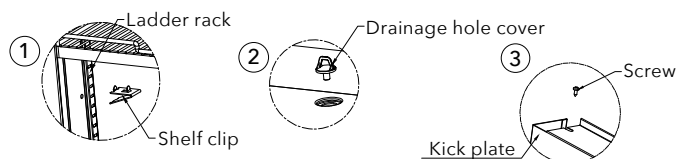
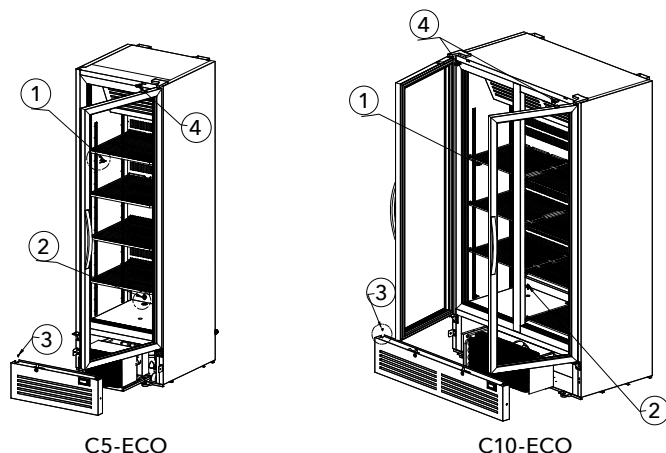
INTERIOR LIGHT

Press the **▲** button to switch the light on or off.

EVAPORATOR FAN

As part of the appliance's normal operation the evaporator fan will switch off automatically when the door is opened. The switch is located in the top of the door rebate (see Fig. 4 on page 8).

Exploded Diagram



Display Chillers C5H ECO & C10H ECO

INSTALLING SHELVES

Fit the shelf clips to the ladder racks (see Fig. 1 on page 8) and install the shelves horizontally. Ensure the clips are located firmly and the shelves are secure before loading the appliance.

CLEANING

The condenser **MUST** be cleaned quarterly. Carefully remove the kick plate (see above for how to remove the kick plate) and use a soft brush to clean the condenser.

The external and internal surfaces of the appliance should be cleaned regularly. Switch the appliance off and disconnect the plug from the mains socket. Remove the drainage hole cover (see Fig. 2 on page 8v). Clean the external and internal surfaces of the appliance with a mild soap solution, then wipe dry. Replace the drainage hole cover. Do **NOT** use cleansers containing chlorine or other harsh cleansing agents, as these can damage the stainless steel surfaces and components. Use mild soapy water to clean the gasket and seals.

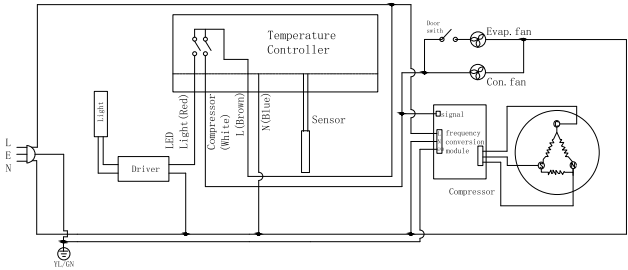
GETTING SERVICE ASSISTANCE

The cooling system is a hermetically sealed circuit and does not require any maintenance other than regular cleaning (see 'Cleaning').

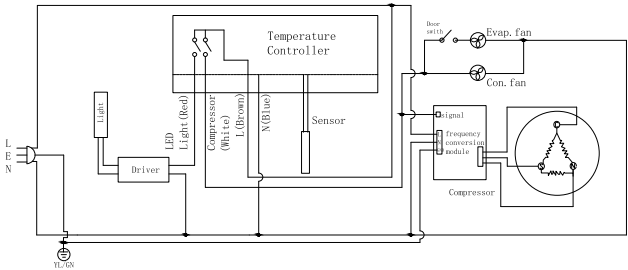
If the appliance fails to work, first check the power supply. If you cannot locate the reason for the failure, please contact your supplier, stating the model and serial number of the cabinet. You may find this information on the rating plate, which is affixed inside the unit on the top right-hand interior wall.

Circuit Diagram

C5H ECO



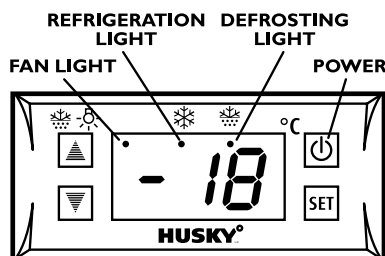
C10H ECO



Display Freezers F5H ECO & F10H ECO

Operating Instructions

TO OPERATE THE ELECTRONIC THERMOSTAT



The thermostat has been pre-set, and in most cases it is not necessary to adjust the settings. When the appliance is operating normally, the display will show the current temperature. To display the set temperature press the **SET** button. Press the button again to return to normal operation.

To set a new temperature, press **SET**. The display will flash and the current set temperature will be displayed. Press the button to increase the set temperature, or press the button to decrease the set temperature. Press the **SET** button to save the new setting. The display will flash with the new value and then revert to display the cabinet temperature.

Please note:

1. When the appliance is connected to the mains for the first time there will be a short delay before cooling starts. During this time the Refrigeration Light will flash. After the short delay, cooling will begin and the Refrigeration Light will be illuminated. When the appliance reaches the set temperature, the Refrigeration Light will be off.
2. If you do not press any button, after six seconds the controller will return to its normal display.

To switch the appliance off, press for six seconds. The display will show "-- --". To switch the appliance back on, press for one second. The display will show the cabinet temperature and the appliance will enter normal working mode.

DEFROSTING

The appliance defrosts automatically at preset intervals. If however the door is opened too often, or if the appliance is in a location with high humidity, or if the contents are changed more frequently, it may be necessary to defrost the appliance manually. To start or stop manual defrosting, press the for six seconds. The Defrosting Light will be illuminated. Melt water runs to a container placed in the compressor compartment and evaporates. After defrosting is complete, the appliance will return to normal operation.

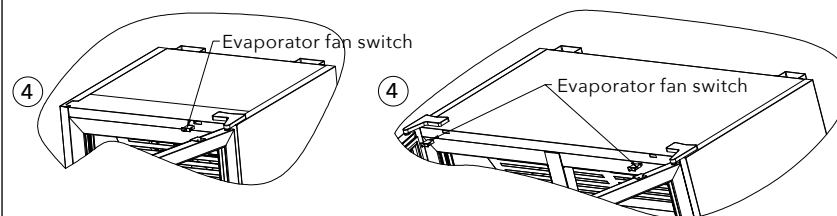
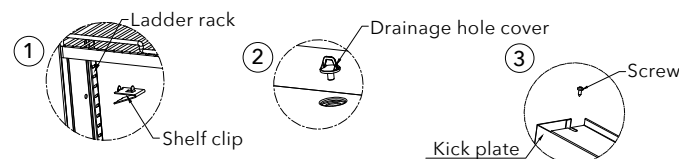
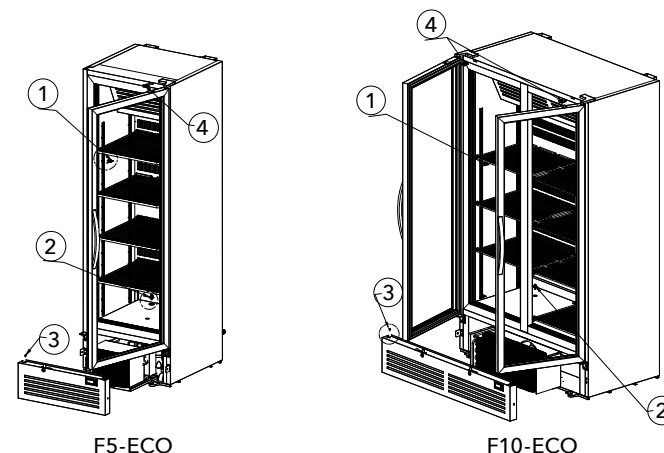
INTERIOR LIGHT

Press the button to switch the light on or off.

EVAPORATOR FAN

As part of the appliance's normal operation the evaporator fan will switch off automatically when the door is opened. The switch is located in the top of the door rebate (see Fig. 4 on page 13).

Exploded Diagram





Welcome to Husky, the home of smart refrigeration. We are a leading global refrigeration specialist with over 25 years experience in quality refrigeration for convenience and hospitality professionals, and we have a great range of chillers for the home too. You'll find Husky products all over the world, so whatever your requirements we're sure to have a good looking energy-efficient model that's perfect for you.

HUSKY[®]

www.husky.co.uk

HELPLINE/TECHNICAL SUPPORT

Tel: 01455 555340 (Monday to Friday 0900 - 1700).

Email: sales@husky.co.uk

SALES

Tel: 01455 555340 (Monday to Friday 0900 - 1700).

Email: sales@husky.co.uk

OUT-OF-WARRANTY SPARES

Email: sales@husky.co.uk