

# HUSKY<sup>®</sup>

## User Manual: Stainless Steel CSS1 Refrigerator and FSS2 Freezer



**To ensure safe operation, please read this user manual thoroughly before use.**

© Husky. Husky reserve the right to change specifications at any time without notice.  
Images used are for illustration only.





# Welcome to your new Husky

Thank you for buying this Husky appliance. It has been designed and manufactured for many years of trouble-free service.

Operation is very simple, but please take a few minutes to read this user manual. It contains important safety information, and tips to ensure you receive the best possible service from your Husky unit.

## CONTENTS

Important Notes.....	3
Warning! Risk of electrical shock hazard .....	3
Disposal of old appliances.....	3
Users in Europe - WEEE compliance.....	3
Safety instructions and warnings .....	3
How to minimise the energy consumption of your appliance .....	4
Before using for the first time.....	4
Troubleshooting.....	5
Maintenance guide and how to get service assistance.....	6
Cleaning .....	7
Operating the electronic thermostat, and defrosting .....	8
Fast freeze (FSS2), door open alarm and reversible door.....	9
Circuit diagrams and controller wiring diagrams.....	10



# All models

## Important Notes

### WARNING: RISK OF ELECTRICAL SHOCK HAZARD

**USERS IN EUROPE:** This refrigeration appliance must be earthed. If the power cable is damaged, it must be replaced by a qualified engineer to avoid shock hazard. **DO NOT ATTEMPT TO SERVICE THE ITEM YOURSELF.** Ensure that the appliance is properly earthed. Stop using the appliance immediately if an electric shock is felt when touching the cabinet.



### DISPOSAL OF OLD APPLIANCES

**BE SURE TO MAKE ANY LOCKS UNUSABLE. IF POSSIBLE, REMOVE THE DOOR(S) AND DISCARD SEPARATELY.**

**WARNING - CHEMICAL HAZARD: DO NOT ALLOW CHILDREN TO PLAY WITH OLD REFRIGERATORS. CONTACT YOUR LOCAL AUTHORITY FOR PROPER DISPOSAL PROCEDURES.**

Before disposing of an old appliance, please make sure it is switched off and safe. Unplug the appliance and break any locks in order to avoid children becoming trapped.

Please note: the refrigeration system contains gases and refrigerants which require specialist waste disposal. The valuable materials contained in a appliance can be recycled.

Contact your local waste disposal depot for proper disposal of an old appliance and contact your local authority or dealer if you have any questions.

Ensure the pipework of your appliance is not damaged prior to disposal. You can contribute to the environmental awareness by insisting on an appropriate non-polluting method of disposal.

### USERS IN EUROPE - WEEE COMPLIANCE

These appliances are authorised to carry the CE (Conformité Européene) and WEEE (Waste Electrical and Electronic Equipment Directive) symbols.

The WEEE symbol on this appliance indicates that the product must not be disposed of with household waste. To help prevent possible harm to health and the environment, the product must be disposed of by recycling methods authorised as environmentally safe. For more information on how to dispose of this product appropriately, contact your dealer or the recycling department at your local authority.

These appliances and their components undergo strict product testing by independent companies to comply or exceed all applicable local and international regulatory standards.



### SAFETY INSTRUCTIONS & WARNINGS

Before switching on your appliance, read the information in this user manual carefully. The user manual contains important observations relating to the assembly, operation and maintenance of the appliance.

Please keep this user manual in a safe place for future reference. If you ever sell this appliance, hand this user manual to the new owner.



The manufacturer does not accept responsibility for any damages that may arise due to non-observation of these instructions.

- Do not use the appliance if it is damaged. If you are in any doubt, consult an engineer.
- Connection and installation of your appliance are to be carried out in strict compliance with the relative instructions in this user manual.
- Make sure there is a suitable power outlet with proper grounding to power the appliance.
- For safety, the appliance must be properly earthed in accordance with specifications.
- Always remember to unplug the unit before cleaning. Never unplug this appliance by pulling on the power cable. Always grip plug firmly and pull straight out from the socket.
- All electrical repairs must be carried out by a qualified engineer. Inadequate repairs may be dangerous.
- Do not damage any parts of the appliance which carry refrigerant by piercing, perforating, crushing, twisting or scraping. If refrigerant comes into contact with the eyes it may cause serious eye injury.
- Do not obstruct or cover the ventilation grille.
- Do not allow children to play with the appliance, or to sit on it or hang onto the door.
- This appliance is not intended for use by persons (including children) with reduced physical, sensory or mental capabilities, or lack of experience and knowledge, unless they have been given supervision or instruction concerning use of the appliance by a person responsible for their safety.

## HOW TO MINIMISE THE ENERGY CONSUMPTION OF YOUR APPLIANCE

- Energy consumption will be lower if the appliance stands in a well ventilated space and in particular if the vents on the appliance are clear of obstruction.
- Do not place the appliance in direct sunlight or near a heat source such as ovens, radiators, heaters, etc as this will increase energy consumption.
- Keep the appliance door closed as much as possible.
- Setting the thermostat colder means higher energy consumption, so set only as cold as you really require.
- Do not overfill the appliance - overfilling means the cool air cannot circulate freely inside the appliance which may slow the process of chilling/freezing the contents and make the appliance less efficient.
- Defrost the appliance if frost can be seen building up inside - frost will increase energy consumption and make the chilling/freezing process slower (see section 'Defrosting').
- Turn the appliance off completely if it is not required for a period of days (or longer) to avoid wasting energy.

## BEFORE USING FOR THE FIRST TIME



**IMPORTANT: Before switching the unit on, we recommend you allow it to stand upright for 8 hours. Failure to do this may result in damage to the appliance.**

- Remove packaging.
- To ensure correct operation, it is important that the appliance is level. The cabinet may be levelled by turning either or both of the adjustable feet in the front corners. Use a spirit level to check.
- Before operation, we recommend that the cabinet is cleaned for reasons of hygiene and to remove any residue left from manufacture.
- For good circulation, vents must not be blocked. Keep a minimum of 100mm of clear space around the appliance. Your appliance should be placed on flat and firm surface for quieter operation. Failure to do so may cause loss of performance.
- Do not expose the appliance to direct sunlight or a heat source such as ovens, radiators, heaters, etc. Failure to do so may cause loss of performance.
- Do not under any circumstances place heated food or beverages in your appliance.
- Do not open the door more often than necessary to lessen the escape of cold air.
- For better air circulation, do not overfill the appliance.
- Adjust the thermostat according to the amount of product and the ambient temperature.





## Troubleshooting

Before calling Technical Support, please check the following points; you may be able to solve any problem yourself.

Problem	Possible Cause	Action
The appliance has no power.	The appliance is not plugged in.	Connect the plug to the power supply.
	The plug and/or the power cable are faulty.	Call your supplier or a qualified engineer.
	The fuse has blown.	Replace the fuse with one of the same rating.
The appliance's internal temperature is too high or too low.	The wrong temperature is selected.	Check the controller and adjust the set temperature.
	The factory default settings for the controller are incorrect.	Contact Husky for advice.
	The condenser is blocked by an accumulation of dust.	Clean using a vacuum cleaner and soft brush attachment (see p7).
	The door is not fully closed.	Check the appliance is level and the door seals are not damaged or not seated correctly.
	The appliance is close to a heat source or the ambient temperature is too high.	Move the appliance to a better location and check it is out of direct sunlight.
	The ventilation grille is blocked.	Move the appliance to improve free movement of air.
The appliance is noisy in operation or makes unusual noises. <ul style="list-style-type: none"> <li><i>Note: It is normal to hear some noises as refrigerant flows through the compressor.</i></li> </ul>	The appliance is not on a level, firm surface, or the appliance may be touching other items.	Check location and position using a spirit level.
	The appliance is vibrating against a neighbouring object.	Relocate the appliance or the object.
Outer surfaces are wet	Appliance may be close to a water source or leak.	Dry surfaces thoroughly and move the appliance.
Inner surfaces are wet	The door may be opened too often or kept open too long. Door gasket may be unseated or damaged.	Try to minimise the opening of the door for better cooling performance. Ensure door seal is seated correctly and replace if worn or damaged.





# General operating instructions

## Operating Instructions

### EASY MAINTENANCE ACCESS

Switch the appliance off and disconnect from the mains supply. To access the compressor compartment, simply remove the screws securing the rear access panel - see Fig 1 on page 7. Any repairs or maintenance, other than CLEANING (see below) must be carried out by QUALIFIED ENGINEERS ONLY.

### CLEANING

The condenser and the compressor compartment MUST be cleaned quarterly. Switch the appliance off and disconnect from the mains supply. See 'Easy Maintenance Access' how to access the compressor compartment. Use a vacuum cleaner fitted with a soft brush attachment to remove dust carefully from the condenser, the components and grilles - see Fig 2 on page 7.

The external and internal surfaces of the appliance should be cleaned regularly. Switch the appliance off and disconnect from the mains supply. Clean the external and internal surfaces of the appliance with a mild soap solution, then wipe dry. Do NOT use cleansers containing chlorine or other harsh cleansing agents, as these can damage the stainless steel surfaces and components. Use mild soapy water to clean the gasket and seals.

### GETTING SERVICE ASSISTANCE

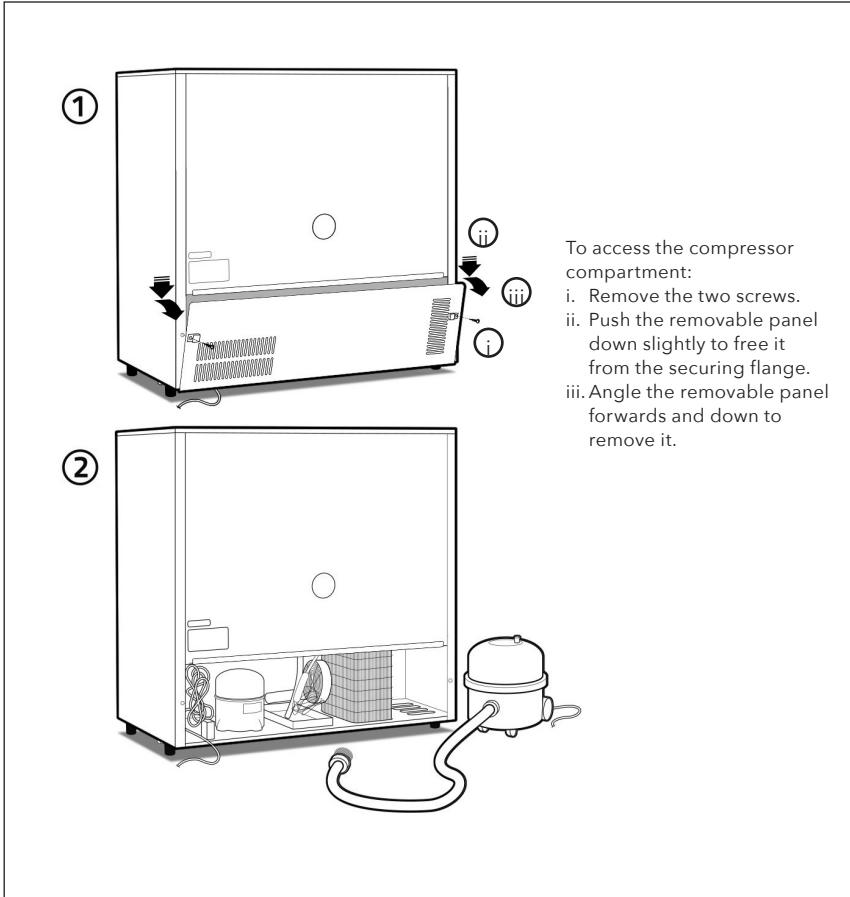
The cooling system is a hermetically sealed circuit and does not require any maintenance other than regular cleaning (see 'Cleaning').

If the appliance fails to work, first check the power supply. If you cannot locate the reason for the failure, please contact your supplier, stating the model and serial number of the cabinet. You may find this information on the rating plate, which is affixed inside the unit on the top right-hand interior wall.





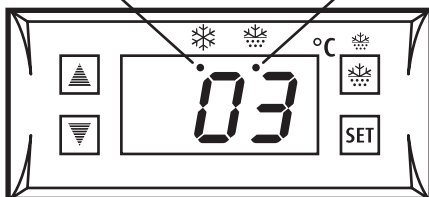
## Cleaning







## TO OPERATE THE ELECTRONIC THERMOSTAT

### REFRIGERATION LIGHT DEFROSTING LIGHT



The thermostat has been pre-set, and in most cases it is not necessary to adjust the settings. When the appliance is operating normally, the display will show the current temperature.


To display the set temperature press the **SET** button. Press the button again to return to normal operation.

To set a new temperature, press **SET**. The display will flash and the current set temperature will be displayed. Press the  button to increase the set temperature, or press the  button to decrease the set temperature. Press the **SET** button to save the new setting. The display will flash with the new value and then revert to display the cabinet temperature.

Please note:

1. When the appliance is connected to the mains for the first time there will be a short delay before cooling starts. During this time the Refrigeration Light will flash. After the short delay, cooling will begin and the Refrigeration Light will be illuminated. When the appliance reaches the set temperature, the Refrigeration Light will be off.
2. If you do not press any button, after six seconds the controller will return to its normal display.

### DEFROSTING

The appliance defrosts automatically at preset intervals. If however the door is opened too often, or if the appliance is in a location with high humidity, or if the contents are changed more frequently, it may be necessary to defrost the appliance manually. To start or stop manual defrosting, press the  button for six seconds. The Defrosting Light will be illuminated. Melted water runs to a container placed in the compressor compartment and evaporates. After defrosting is complete, the appliance will return to normal operation.







---

## **FAST FREEZE (FSS2H ONLY)**

To start quick freezing: Press "Up Arrow" for 3 seconds to start the quick-freezing function. The corresponding LED will light. The compressor will continue to run until the temperature is reached to the one set.

## **DOOR OPEN ALARM**

If the door remains open for 1 min or longer an alarm will be activated. The display will show "dr" and the room temperature alternately. A buzzer will also sound to indicate the door opening, press any button to mute the buzzer.

## **REVERSIBLE DOOR**

As standard both CSS1 and FSS2 models are supplied with the door hinged on the right-hand side, opening from the left hand side. Should you wish to change the opening direction follow the steps as follows:

1. Unplug the cabinet from the mains.
2. Open the door to access the screws for the top hinge.
3. Remove the four screws from the top hinge.
4. Carefully lift door to remove from the cabinet.
5. Remove the four screws from the bottom hinge.
6. Repeat Steps 1-5 in reverse to refit the door on the opposite side.

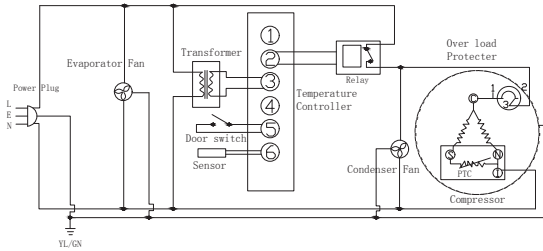




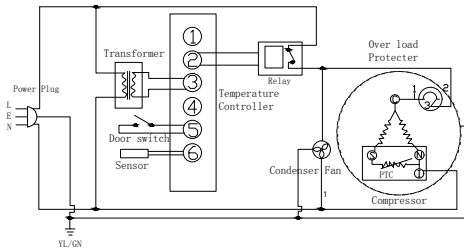
# CSS1H REFRIGERATOR

## Circuit Diagrams

### CSS1H REFRIGERATOR

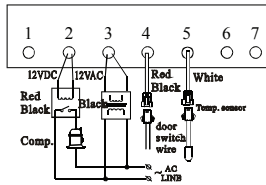


### FSS2H FREEZER



## Wiring Diagram

### ELECTRONIC THERMOSTAT SF-102SQ





---

## Notes





Welcome to Husky, the home of smart refrigeration. We are a leading global refrigeration specialist with over 25 years experience in commercial refrigeration for convenience and hospitality professionals. Whatever your requirements, we're sure to have a good looking energy-efficient model that's perfect for you.

# HUSKY<sup>®</sup>

[www.husky.co.uk](http://www.husky.co.uk)

## HELPLINE/TECHNICAL SUPPORT

Tel: 01455 555340 (Monday to Friday 0900 - 1700).

Email: [sales@husky.co.uk](mailto:sales@husky.co.uk)

## SALES

Tel: 01455 555340 (Monday to Friday 0900 - 1700).

Email: [sales@husky.co.uk](mailto:sales@husky.co.uk)

## OUT-OF-WARRANTY SPARES

Email: [sales@husky.co.uk](mailto:sales@husky.co.uk)

19.09.24

